



# May 2019 Sawyer County 4-H Youth and Family Newsletter

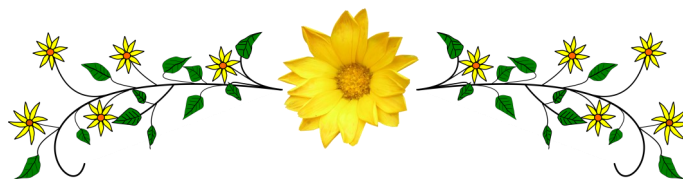
## 4-H CALENDAR OF OPPORTUNITIES

Cancellations may be made due to low enrollments for programs. **Pre-register** for meetings and activities by the deadline! **All who register** will be contacted if there is a cancellation. Meetings are cancelled if school is cancelled. All meetings are open to 4-H youth and adults.

Please contact the Extension office for details for any meetings.

Visit our website <https://sawyer.extension.wisc.edu/> for current information and follow us on Facebook!

- |           |  |
|-----------|--|
| May 11    | Chippewa County 4-H horse program, Northern Wisconsin State Fair Grounds Chippewa Falls, 9AM |
| May 14    | Placemaking Hayward, Veterans Community Center in Hayward, 5:30-9PM                          |
| May 19    | Winter Evergreens Club meeting, 4PM, location TBA  |
| May 31    | Rusk/Sawyer Summer Camp Registration due to Sky at Extension Sawyer County                   |
| Jun 8     | 4-H Project Day, Fairgrounds, 1-4PM  |
| Jun 22    | June Dairy Breakfast, Sawyer County Fair Grounds, 6-11AM                                     |
| Jun 24-27 | Wisconsin 4-H & Youth Conference, UW-Madison   |
| Jul 9     | State 4-H Plant Science Day, see our website for more details                                |
| Jul 9-11  | Rusk/Sawyer Summer Camp, Trail's End camp in Bruce WI  |



Please submit articles to Extension support staff, Tanya Hofer for the

June newsletter by May 25th



## Club/Group/Project Connection

### Winter Evergreen news:

For our February Meeting, we made home-made candies with chocolate and peanuts and colored a box to put our candies in. We made a Valentine's Day inspired STEM balancing project, with a cardboard heart and 2 skewers and some clay. If you positioned your supplies correctly, you could get it to balance on your finger or even your nose.

At our April meeting, we worked on a community service project for the animal shelter. We made homemade dog biscuits and braided dog toys to go along with them. They will be dropped at the local humane society. We also did a quick LEGO challenge and did our names in LEGO bricks or made a LEGO Easter egg.







## Club/Group/Project Connection

The 4 Leaf Clover Club met Sunday April 28th at the Fairgrounds. We went over making sure everyone is registered for all projects in the fair. We also discussed the upcoming Dairy Breakfast and getting signed up to help. We will not meet in the month of May and our June meeting is the Dairy Breakfast. We ask each member to volunteer a few hours.

## 4-H Members!

**Do you have a story or a picture you would like to share? It can be about anything you choose. Perhaps a project you are working on or your favorite pet? A picture of you with that pet or project? If you would like to have it in the newsletter, have a parent or leader email it to [tanya.hofer@wisc.edu](mailto:tanya.hofer@wisc.edu) and we will get it in the next issue!**

## 4-H Project Day

Have you been wondering about a project?

- What do they do in the project?
- How can I participate in the project?
- Who is the project leader?

Come get your answers at the Sawyer County Fair Grounds on Saturday, June 8th from 1-4 pm. Youth and Project leaders will be showing off their project skills! This fun filled afternoon will provide some hands-on experience as well as a chance to meet other members with your same interests. You may even get inspired to try a project you haven't done before. More information to come, so watch our website, Facebook, and newsletter!

## FYI

### Because Money Doesn't Grow on Trees...

Did you know that Sawyer County offers several grants that can help you pay for your project expenses?

The Nate Delong Memorial Project Support Grant provides seed money to make your project attainable for 4-H Youth in the following Project areas: Poultry, Vegetables, Plant and Soil Science and STEM. Any Sawyer County 4-H youth enrolled in any one of specified projects can apply. You can ask for \$ 1 - \$20 however, the grant cannot cover the entire cost of a project. You and your club or project will have to supplement the grant with club/project member dues, Club/project funds, ask for in-kind donations, hold a fundraiser, or look to other sources to get everything you need to meet your project goal.

The Sawyer County 4-H Clubs, Inc. Project Support Grants provide seed money for various Sawyer County programs and projects. Any Sawyer County 4-H club, group of 4-H clubs or project can apply for a grant. You can ask for \$5 - \$300 from the 4-H Project Grant program. However, the grant *cannot* cover the entire cost of a project. You, your club or project will have to supplement the grant with club/project member dues, Club/project funds, ask for in-kind donations, hold a fundraiser, or look to other sources to get everything you need to meet your project goal.

Sawyer County 4-H Clubs, Inc. Community Service Grants seek to support 4-H youth **community service** projects. Any Sawyer County 4-H Club/group of 4-H Clubs/ 4-H project/4-H committee can apply for a grant. You can ask for \$ 25 - \$200 from the 4-H Community Service Grant program. However, the grant cannot cover the entire cost of a project. Your 4-H group will have to supplement the grant with club/project/committee funds, ask for in-kind donations, hold a fundraiser, or look to other sources to get everything you need for your project.

For more information or applications, please visit our website at <https://sawyer.extension.wisc.edu/4-h-club-forms-and-resources/> and choose the Sawyer County 4-H Mini-Grants link.





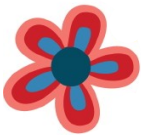
## Opportunities

### CHIPPEWA COUNTY 4-H HORSE PROGRAM OPEN PLEASURE SCHOOLING SHOW

May 11, 2019

Northern Wisconsin State Fair Grounds

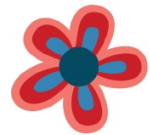
Chippewa Falls, WI



9:00 am Rain or Shine

Judge: Jody Zuelsdorff-Hamerla

Ribbon Show: 1-6 Places



Entry Fee: \$2.00 per class/horse

Office Charges: \$3.00 Per Horse

#### Specific Show Rules:

This is a 4-H Sponsored Event so All Riders Must wear a SEI approved Helmet

Must provide copy of current negative coggins

Horse/rider combo cannot enter both three gaited and walk trot classes

A saddle (mounted) and bridle (mounted/cart) are required when riding/driving a horse.

(no bare back riding allowed on grounds)

No intact males (stallions) allowed on grounds

- |   |  |
|---|--|
| 1. Horse mares four years and over at Halter      | 22. Equitation over fences 18 and over |
| 2. Horse geldings, four years and over at Halter  | 23. Driving Pleasure                   |
| 3. Horse three years and under at Halter          | 24. Driving Reinsmanship               |
| 4. Showmanship at halter 9-13                     | 25. Western Horsemanship 9-13          |
| 5. Showmanship at halter 14-17                    | 26. Western Horsemanship 14-17         |
| 6. Showmanship at halter 18-34                    | 27. Western Horsemanship 18-34         |
| 7. Showmanship at halter 35 and older             | 28. Western Horsemanship 35 and over   |
| 8. Showmanship at halter Horseless horse all ages | 29. Walk Trot Horsemanship 9-13        |
| 9. English Equitation 9-13                        | 30. Walk Trot Horsemanship 14-17       |
| 10. English Equitation 14-17                      | 31. Walk Trot Horsemanship 18 and over |
| 11. English Equitation 18-34                      | 32. Western Pleasure 9-13              |
| 12. English Equitation 35 and over                | 33. Western Pleasure 14-17             |
| 13. English Pleasure 9-13                         | 34. Western Pleasure 18-34             |
| 14. English Pleasure 14-17                        | 35. Western Pleasure 35 and over       |
| 15. English Pleasure 18-34                        | 36. Walk Trot Pleasure 9-13            |
| 16. English Pleasure 34 and over                  | 37. Walk Trot Pleasure 14-17           |
| 17. Hunter Hack 9-13                              | 38. Walk Trot Pleasure 18 and over     |
| 18. Hunter Hack 14-17                             | 39. Walk Trot Horseless Horse all ages |
| 19. Hunter Hack 18 and over                       | 40. Trail class 9-17                   |
| 20. Equitation over fences 9-13                   | 41. Trail class 18 and over            |
| 21. Equitation over fences 14-17                  | 42. Walk Trot Trail- all ages          |

\*\*\*NO TRAINING DEVICES ALLOWED\*\*\*

\*\*\*Proper Show Clothes Required (bling not required) \*\*\*

Chippewa County 4-H Horse Program is NOT Responsible for any injury or lost or stolen items There will be a food stand on the grounds

For More Information Find us on Facebook

(<https://www.facebook.com/Chippewa-County-4-H-Horse-Program-1764769240501747/>)



**MAY 14**  
**5:30PM-9:00PM**

Veterans Community Center  
10534 Main Street  
Hayward, WI 54843

# PLACEMAKING HAYWARD

## COMMUNITY INSPIRATION NEEDED!

Join us on **May 14 (5:30pm - 9:00pm)**  
for a special placemaking exercise.  
Help us make Hayward an even better city  
to live, visit, work, and play.

### Attendees will:

- ▶ Identify strategies to promote what we have and enhance the connections between key destinations.
- ▶ Explore and discuss potential improvements for key areas such as our downtown, Hayward City Beach, Shues Pond, Sherman and Ruth Weiss Community Library & trails, Lumberjack Bowl, the corner of Hwys 27 & 63, and Hatchery Creek park.
- ▶ Collaborate on low-cost strategies and longer-term ideas

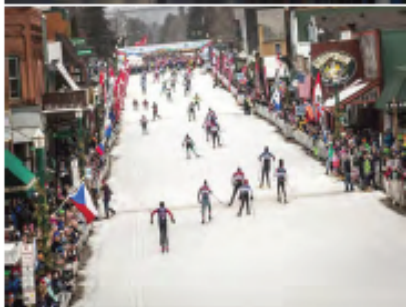
**"Set the virtuous cycle in motion. Fired up!"**  
- comment from a placemaking workshop in Eau Claire

### What is Placemaking?

Placemaking is the planning, design, and management of public spaces. Placemaking involves listening to and asking questions of the people who live, work, and play in a particular space to determine their needs and aspirations.

Everyone is welcome to attend. Meal provided. If you have questions, please contact: Bruce Paulsen, Sawyer County/Lac Courte Oreilles EDC at 715-634-3618. Visit [www.sclcoedc.com](http://www.sclcoedc.com)

If rain, event will be re-scheduled for May 21st at 5:30pm  
at Veterans Community Center - 10534 Main Street, Hayward.



Lumberjack Bowl Championships

Hosted by:



Sponsors:





The Wisconsin 4-H Foundation is once again sponsoring an arts event to support and promote the 4-H Arts. The inaugural event was held last October and was a great success!! In October, the WI 4-H Foundation will hold an Arts Auction and Reception to support and promote the 4-H Arts Program, and to network with arts-programming supporters and prospects. Proceeds from the event will be invested in the Talen Endowment for 4-H Arts Programming and in other arts programs for the next 4-H calendar year.

To make this year's event successful, the Wisconsin 4-H Foundation will be sponsoring an Arts Contest with cash prizes totaling \$700. **To be eligible for the Wisconsin 4-H Foundation Arts Contest, youth must be an enrolled 4-H member for the 2018-2019 Program Year. Entrants do not need to be enrolled in any specific project to participate.** The contest will be divided into four categories:

#### Drawing Using any Medium

- Pencil, Ink, Charcoal, Pastel or Other Media
- No larger than 2' x 3'
- Unframed but may be mounted for stability (foam board or matt board)
- Original art only, no kits
- Must be signed and dated on the front by the artist (lower right corner, if possible)

#### Painting (Watercolor, Acrylic or Oil)

- Watercolor, Acrylic or Oil
- No larger than 2' x 3'
- Unframed but may be mounted for stability (foam board, matt board and/or if on canvas nothing)
- Original art only, no kits
- Must be signed and dated on the front by the artist (lower right corner, if possible)

#### Photography

- Black and White or Color print
- 8" x 10" or 11" x 17"
- Unframed but may be mounted for stability (foam board or matt board)
- Must be signed and dated on the front by the artist (lower right corner, if possible)

#### Other (Paper or Fiber Art, Pottery, Jewelry, Leathercraft, Glass, etc.)

- Any media using natural or synthetic fiber, paper, fabric and/or yarn
- No larger than 2' x 3' or six square feet
- Unframed but may be mounted for stability, if applicable
- Original art only, no kits
- If possible, signed and dated on the front/bottom by the artist



A first and a second place will be chosen in each category with a Best of Show Award given to one entry chosen by the judging committee. Category winners will receive a \$100 cash award and reserve in each category will receive a \$50 cash award. The Best of Show Entry will receive an additional \$100 cash award.

**Entries will be accepted on Monday, June 24, 2019 from Noon to 2 pm, at Sellery Hall on the University of Wisconsin-Madison Campus.** Entries can be delivered by the artist, a representative of the artist, a County Youth Educator or a member of a county delegation to Wisconsin 4-H & Youth Conference. Items **not** placing first or second in their division will be released at the conclusion of Wisconsin 4-H & Youth Conference. Any item not picked up at the conclusion of the conference will NOT be returned to the artist. All items must have the following information printed on or firmly attached to the back of the art:

- |                                |  |
|--------------------------------|--|
| 1. Artist Name                 | 6. Artist 4-H Club Name and Leader's Name                                  |
| 2. Artist Address              | 7. Artist Grade  |
| 3. Artist Email (if available) | 8. Brief description (100 words or less) of the inspiration for the piece. |
| 4. Artist Phone Number         | 9. Brief statement (100 words or less) about what 4-H means to the artist. |

The first and second place items in each category will become the property of the Wisconsin 4-H Foundation and will not be returned. All rights to the winning pieces of art become the property of the Wisconsin 4-H Foundation and artists relinquish all rights to use, reproduce or exhibit their entry. Artists may be asked to sign their work or to sign reproductions of their work.

We are looking forward to showcasing Wisconsin 4-H members' artistic and creative masterpieces at the WI 4-H & Youth Conference Arts Contest in June and then at the WI 4-H Foundation Arts Event in October! If you have any questions, please contact Amber Rehberg at [amber.rehberg@wisc.edu](mailto:amber.rehberg@wisc.edu) or 608.262.1557.





## **EXTENSION RUSK/SAWYER COUNTY TRAIL'S END YOUTH CAMP JULY 9-11, 2019**

Enjoy outdoor adventure and fun at Extension's 2019 Trails End Camp. All Rusk and Sawyer County youth are invited to participate and join in the adventure, fun and learning! With the opportunity to make new friends and learn new skills, camp is guaranteed to be a great time and a great deal! Youth participate in a wide variety of activities, while under the care of high school aged youth leaders and adult volunteers who have been screened and trained. Campers also have fun participating in teamwork activities with youth and adult staff, volunteers and youth development professionals. This is an overnight camp that is open to youth who just completed 3rd-7th grade. Trails End Camp is located in Bruce, WI. To register, please complete the form on the back and return to Extension Rusk County as indicated.

### **Trails End Camp Features:**

- . Arts & Crafts
- . Nature & Science Exploration Team Challenges
- . Night Hikes & Night Games Recreation Activities
- . Swimming & Water Activities Special Campfires
- . Music & Dance
- . Canoe Trip Down Chippewa River Older Youth Role Models
- . Lots of FUN!



**For more information about 2019 camp  
contact Sky Holt, Sawyer County 4-H Positive Youth  
Development Educator at 715-638-3237**



## 2019 Rusk/Sawyer County Summer Camp Registration



Extension  
UNIVERSITY OF WISCONSIN-MADISON

Camper's First Name: \_\_\_\_\_ Last Name: \_\_\_\_\_

Address \_\_\_\_\_ City: \_\_\_\_\_ Zip: \_\_\_\_\_

Male/Female: \_\_\_\_\_ Grade (just completed) : \_\_\_\_\_ Age: \_\_\_\_\_

Phone 1: (\_\_\_\_) \_\_\_\_\_ Phone 2: (\_\_\_\_) \_\_\_\_\_

Email: \_\_\_\_\_

Parent/ Guardian Name (s): \_\_\_\_\_

Preferred Cabin or Tent Mate: \_\_\_\_\_

**Cost for 2019 Trails End Camp is \$25 per Camper.**

The Sawyer County 4-H Clubs, Inc. offsets a large part of camp and provides transportation. Camp scholarships and funding assistance are available for all youth. If you are interested in a camp scholarship and/or need funding assistance, please contact Sky at 715-638-3237.

**Waterfront Information** (All campers are required to pass a swim test prior to using the pool or canoes.)

***How well does your child swim?***

Not at all      A little      Average      Very Well

***Rate your child's experience with canoeing:***

Not at all      A little      Average      Very Well



**Lifeguards will be on duty during swimming and waterfront activities at all of our camps.**

*Please circle size preference for Camp T-Shirt:*

Youth Large

Adult Small

Adult Medium

Adult Large

Adult XL

**\*\*Please make Checks payable to Sawyer County 4-H Clubs Inc.\*\***



**Camp Registration & Fees Due May 31st, 2019 to:**

Extension Sawyer County Office  
10610 Main Street Suite 194  
Hayward WI 54843







## DIY

### Indoor/Outdoor Chalkboards

#### Material:

- Item that you want to make into a chalkboard
- Primer/spray primer
- chalkboard paint or chalkboard spray paint
- foam roller
- paint tray
- Paint brush
- Chalk (tip: softer chalk, like sidewalk chalk sometimes writes better)

#### Item Ideas

##### Use these items for indoor/outdoor fun

- Paint the glass on a picture frame
- A small folding table (you can draw games on it like tic-tac-toe or checkers)
- An old door or plywood
- Old metal cookie sheets for a magnetic chalkboard

#### Directions:

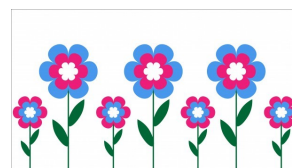
1. Apply an even coat of primer to your item and allow to dry.
2. Apply two even coats of chalkboard paint to your item, letting it dry completely between coats. Be careful not to put too much on causing runs or bubbles.
3. Allow the entire project to dry for two days before using chalk on it.



<https://www.hgtv.com/design/make-and-celebrate/handmade/how-to-make-an-ornate-framed-chalkboard>



<https://www.creatingreallyawesomefunthings.com/diy-giant-outdoor-chalkboard/>



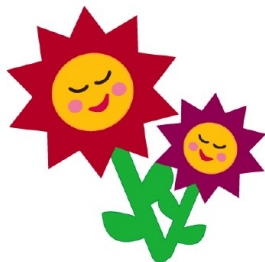


## Leader and Project Introductions



**K**athy Moe is the leader for many of our projects this year, ranging from Exploring Your Environment, to Backpacking/Hiking, to Horticulture.

Interested in small animals, bees, or entomology? Kathy is the leader for those projects as well! Give her a call if you are interested in joining any of these fun projects.



Hi, my name is Ann Korn. I have lived in Hayward since 1975 and taught at Hayward Elementary until I retired. Since then I have enjoyed sewing, traveling, gardening and outdoor activities; hiking and skiing.



I am volunteering to help young people to learn to sew because I want to pass on my love for sewing. I learned to sew thru 4-H, Home Ec. in high school, and reading books. I have sewn clothes for myself, and my son when he was little, I have made quilts for my nieces and nephews. Now I am having fun helping my grandkids sew.



Items crafted by Woodworking project leader, Carl Kozak. **Left:** reclaimed cedar pole foot stool **Right:** barn wood wall art



**D**id you know that 4-H offers a woodworking project? Carl Kozak is the woodworking project leader this year. Whether you have been involved with woodworking for years or you are just now looking into it, all skill levels are welcome to join! For more information about the project or meeting dates and places, feel free to reach out to Carl. His contact information is on the last page of this newsletter. Don't forget you will also need to enroll in the project through 4honline after getting approval from Sky Holt.

It's not too late to sign up for the Legos project!

Get creative and have some fun.

Want to show off your Lego creation?  
Email a picture to  
[tanya.hofer@wisc.edu](mailto:tanya.hofer@wisc.edu) and we will put it in the next newsletter.



Hi, I am Angie Kennell. This is my second year co-leading the Sawyer County 4-H horse project. Growing up in Sawyer County all my life, my husband and I feel very strongly about giving back to the community and helping kids in the area become strong leaders. I grew up on and around horses and am excited to help in the 4-H horse project. I have 5 children, 4 boys and 1 girl. My daughter, Sammie, is very involved in 4-H and horses. When I'm not busy being a sports mom, doing horse related events and watching kids, I like to read, scrapbook, and travel. I look forward to learning along side our youth and helping them give back to our community and become great leaders.





**My**  
name is

Lori Clifford I am entering my 2nd year of being a co leader for the 4 Leaf Clover Club. My daughter Kallen has been in this club and the Hayward Horse Project for 4 years. Our family resides here in Hayward; myself, my husband Kevin, Kallen and Darren. It truly has been a great experience getting to know these kids and seeing what they can do for their community within their club. I look forward to another great year with them!

what this year will bring. We hope to cover many different subjects at our meetings, such as basic life skills like changing a bike tire and identifying trees and plants, team building activities, livestock, and possibly some field trips.



**H**ello, my name is Crystal Hexum. Originally from Rochester, MN, I have been a part of the Hayward community since 2004. I have been a teacher and now the administrator at the HACIL Virtual Charter school for most of that time. I am married to my wonderfully supportive husband Ryan. We have 3 children, our daughter Brianna is in 6th grade (4th year of 4H), our son Griffin is in 3rd (1st year of 4H), and our youngest daughter Lily, who is 4 but thinks she is much bigger. This is the second year of Co-leading the 4 Leaf Clover club with my friend Lori Clifford. We live in the Hayward area with our one dog and 6 chickens. I have enjoyed being part of the 4-H and am so thankful for our children to grow up with these experiences being part of this community.

**H**i my name is Angie DeLisle and I co-lead the Sawyer County 4-H horse project. I believe this is my 5th year leading the project! I have 3 kids, Cade, Cali and Clare. Cade and Cali have been in 4-H for 6 years and this

will be Clare's first year. They are members of the 4 Leaf Clover Club. We have done other projects such as rabbit and poultry, but now horse is our main focus.

The horse project is a big commitment, but we have a lot of fun. We meet monthly in the winter (without our horses 😊) and then start riding weekly at the fairgrounds to begin preparing for the fair, usually around the time school gets out for the summer. We also choose a song and begin choreographing and practicing for our drill team to preform at the fair. This seems to be a favorite of many of our members.

I think my favorite part of the horse project is seeing the improvement between horse and rider from the beginning of the year to fair time, and of course the Fair!

Feel free to contact me with any questions regarding being in the horse project! (715-634-8456)



**My** name is Laura Gregory. I recently became one of the new leaders of the Stone Lake 4-H Club. Originally from Wisconsin Rapids, I moved to Stone Lake 14 years ago when I married my husband. Our three sons are the sixth generation on our family's Century farm, where we raise sheep, chickens and vegetables to sell at the local farmers market. I also sell baked goods and special occasion cakes. We are excited about



Hi, I am Carrie Keenan. I've been a part of 4-H in various roles for the past 5 years. I currently serve on the Leadership Board as the secretary, and am co-leader of the horse project in Sawyer County. Apart from 4-H, my husband and I

live in Hayward with our two children, Allie, who is in her 5th year of 4-H, and Jude, who is just beginning his second year. We enjoy riding our horses, and generally just being in the barn or outside. When I'm not schooling my children, or taking care of the horses, chickens, cats, dogs, or rabbits, I am busy with my photography business that allows me to enjoy our community and our beautiful north woods.







## Contact Information for 4-H Volunteer Leaders 2018-2019

### Organizational Club/Group Leaders and Officers

<b>Crystal Hexum</b> - 4-Leaf Clover Club Co-Leader	crystal.hexum@yahoo.com	715-699-2996
<b>Lori Clifford</b> – 4-Leaf Clover Club Co-Leader	klclifford04@Hotmail.com	715-699-2964
<b>Deb Steiner</b> - Winter Evergreens Club Co-Leader, 4-H Clubs Inc. President	tdsteiner5@gmail.com	715-266-6417
<b>Tina Coss</b> - Winter Evergreens Club Co-Leader, 4-H Clubs Inc. Vice President	tina_coss@yahoo.com	715-266-8016
<b>Carrie Keenan</b> – 4-H Clubs, Inc. Secretary	carriekeen4@gmail.com	715-634-0721
<b>Donna Knuckey</b> – 4-H Clubs, Inc. Treasurer	jdknuck@live.com	715-266-4402
<b>Laura Gregory</b> - Stone Lake 4-H Club Leader	meadowviewfarms@hotmail.com	715-558-6901
<b>Rhandi Ehn</b> - MASC co-group leader	lynnr3684@gmail.com	715-661-4005
<b>Joey Johnson</b> - MASC Treasurer	wenonah.johnson@gmail.com	715-558-3519
<b>Alesha Pecha</b> - 4 Leaf Clover Cloverbuds co-leader	pechaale@charter.net	715-558-4660

### Project and Resource Leaders

<b>Angie DeLisle</b> - Horse Project co-leader	adelisle@hayward.k12.wi.us	715-634-8456
<b>Carrie Keenan</b> - Horse Project co-leader	carriekeen4@gmail.com	715-634-0721
<b>Judah Keenan</b> - Horse Project co-leader	carriekeen4@gmail.com	715-634-0721
<b>Donna Knuckey</b> - Swine Project co-leader	jdknuck@live.com	715-266-4402
<b>Jeremiah Knuckey</b> - Swine Project co-leader	jdknuck@live.com	715-266-4402
<b>Kathy Robinson</b> - Horse Project co-leader	kjr91@hotmail.com	715-699-5405
<b>Jessica Bjork</b> - Project Leader for Sawyer County Youth Health Leaders (SCYHL)	jbjork@sawyerhs.hayward.wi.us	715-634-4806
<b>Angie Kennell</b> - Horse Project co-leader, Resource Leader, Flower Project leader	creativechaos1@hotmail.com	715-634-7781
<b>Brittany Dennis</b> - Horseless Horse Project co-leader	brit.25@live.com	715-558-6652
<b>Sabrina Dennis</b> - Horseless Horse Project co-leader	sab.14@live.com	715-558-6447
<b>Kathy Moe</b> - Exploring Your Environment Leader, Small Animals Leader, Horse Resource Leader, Backpacking/Hiking RL, Bees RL, Entomology RL, Horticulture RL	kmoe@fs.fed.us	715-634-4897



<b>Debi Steiner</b> - Photography Leader, Art Leader (Winter Evergreens)	tdsteiner5@gmail.com	715-266-6417
<b>Kyle Kinsley</b> - MASC Beef Project Leader	kkinsley.kk.21@gmail.com	715-563-0118
<b>Carl Kozak</b> - Woodworking Project Leader	Cekhh@cheqnet.net	715-634-2219
<b>Shelley Bartz</b> - Lego Project Leader	Shelleysb4@gmail.com	715-307-7198
<b>Bryan Bartz</b> - Activity Leader	Bryan54843@gmail.com	715-634-5322
<b>Ann Korn</b> - Sewing Project Leader	korn.ann1@gmail.com	715-634-3951

**Extension staff**

<b>Sky Holt</b> - 4-H/Youth Development Educator Main contact for 4-H questions	sky.holt@wisc.edu	715-634-4839
<b>Tanya Hofer</b> - UWEX support staff	tanya.hofer@wisc.edu	715-638-3316

